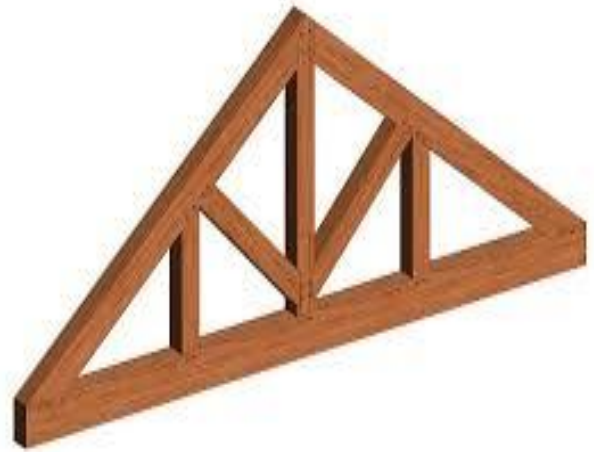




GOVT. POLYTECHNIC COLLEGE, BUDGAM (J&K)

Recognised by the J&K Government, Approved by AICTE and Affiliated with J&K Board of Technical Education



Structural Mechanics Lab

DEPARTMENT OF CIVIL ENGINEERING

S. No	Equipment	Discription	Quantity
1		<p><u>Simple Roof Truss</u></p> <p>Roof trusses are structural frames that support the roof and transfer the load to the walls or columns. They are widely used in construction because they offer many advantages, such as design flexibility, cost efficiency, and durability. This model is used to make students familiar with the type of deflection developing in truss with the application of load.</p>	1
2		<p><u>Universal Testing Machine</u></p> <p>A universal testing machine (UTM), also known as a universal tester, materials testing machine or materials test frame, is used to test the tensile strength and compressive strength of materials. An earlier name for a tensile testing machine is a tensometer. The "universal" part of the name reflects that it can perform many standard tensile and compression tests on materials, components, and structures.</p>	1
3		<p><u>Stop Watch</u></p> <p>Stopwatches are used in laboratories to measure time intervals.</p>	2
4		<p><u>Searle's Apparatus</u></p> <p>Searle's apparatus is used for the measurement of Young's modulus. It consists of two equal-length wires that are attached to a rigid support.</p>	1